

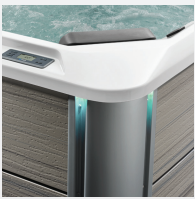
HOT SPOT® COLLECTION



Frog® In-Line
Cartridge Ready



FiberCor®
High-Density Insulation



Exterior Lighting

RHYTHM®



*Shown with Alpine White Shell
and Almond Cabinet.*

People	Seating	Jets	Voltage
7 Seats	Open	40 Jets	230 V

Size
213 cm x 213 cm x 92 cm

Water Care
FROG® In-Line Cartridge Ready



Hot Spring Spas Australasia Pty Ltd
Phone: 1800 148 688 | Email: info@hotspring.com.au

HOT SPOT® COLLECTION

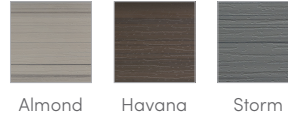
RHYTHM®



SHELL COLORS*



CABINET COLORS*



COVER COLORS

POLYESTER



LEGENDARY MASSAGE

40 Personalized-Control Jets

- 3 XL Directional Hydromassage jets
- 2 XL Rotary Hydromassage jets
- 3 Directional Hydromassage jets
- 2 Rotary Hydromassage jets
- 30 Directional Precision® jets

EASY WATER CARE

Water Care System FROG® In-Line Cartridge Ready

Filtration System (1) Polyester 6m² filter, top loading

LEADING ENERGY EFFICIENCY

Jet Pump 1 Wavemaster® 8200; Two-speed, 2.0 HP Continuous Duty, 4.0 HP Breakdown Torque

Jet Pump 2 Wavemaster® 8000; One-speed, 2.0 HP Continuous Duty, 4.0 HP Breakdown Torque

Heater No-Fault® 2,000 W / 230 V

Cover WeatherPro(TM) 4" Tapered Custom-Fit with Hinge Seal

SIZE

Dimensions 213 cm x 213 cm x 92 cm

CAPACITY

Seating Capacity 7 seats

Water Capacity 1,250 liters

Weight 383 kg dry / 2,185 kg filled**

ADDITIONAL FEATURES

Smart Spa Technology Hot Spring Spas App, Powered by the Connected Spa Kit

Water Feature Included

Cover Lifters CoverCradle®, CoverCradle II, Lift 'n Glide®, or UpRite®

Steps Hot Spot Collection Step (Almond, Havana, and Storm), Polymer Step (Ash)

Entertainment Wireless Sound System

Control System IQ 2020® with LCD control panel
230 V / 15 amp, 50 Hz
(Includes G.F.C.I. protected sub-panel)

Lighting System Interior: 10 multi-color LED points of light
Exterior: 4 multi-color LED points of light

*Actual colors and products may vary from print representation. See dealer to verify.
**Includes water and 7 adults weighing 80kg each.